



3 bed terraced house to buy in

Foxley, Washington, Tyne and Wear, NE37
3BN

£130,000

 x3  x2  x1

Tenure

Freehold

Property features

- ✓ Three Bedroom Terrace
- ✓ EPC C
- ✓ Well Presented
- ✓ No Onward Chain
- ✓ EPC Rating C

Key Information

- ✓ Council Tax: Band A
- ✓ EPC Rating: C
- ✓ Heating supply: Gas

Description

Immaculately Presented Three Bedroom Family Home

Pattinson Estate Agents are delighted to welcome to the market this exceptionally well-presented three-bedroom terraced home situated within the popular residential area of Foxley, Sulgrave, Washington.

Finished to an excellent standard throughout, this immaculate property offers spacious and modern accommodation ideal for first-time buyers, growing families and investors alike. Ready to move straight into, the home has been lovingly maintained and boasts stylish décor, generous living space and well-appointed accommodation.

The accommodation briefly comprises: welcoming entrance hallway, bright and spacious lounge, modern fitted kitchen/dining room with a range of wall and floor units and ample space for family dining. To the first floor are three well-proportioned bedrooms and a contemporary family bathroom/WC.

Externally, the property benefits from low-maintenance gardens, providing excellent outdoor space for relaxing and entertaining.

Ideally positioned within a well-established residential area, the property enjoys convenient access to local schools, shops, amenities and excellent transport links, including the A1(M), A19 and Washington Highway, making it perfect for commuters travelling throughout the North East.

Early viewing is highly recommended to appreciate the standard and accommodation on offer.

Council Tax Band: A

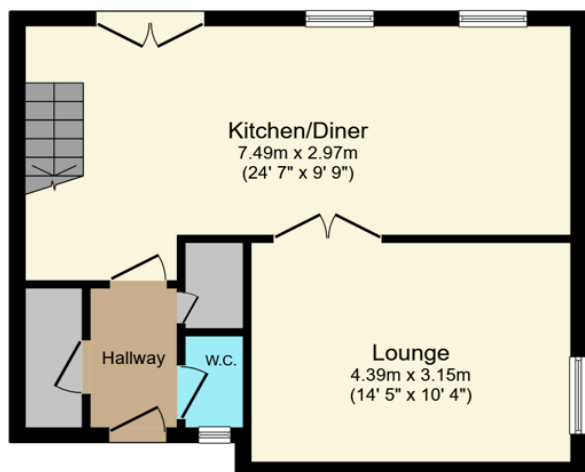
Tenure: Freehold

Price: £130,000

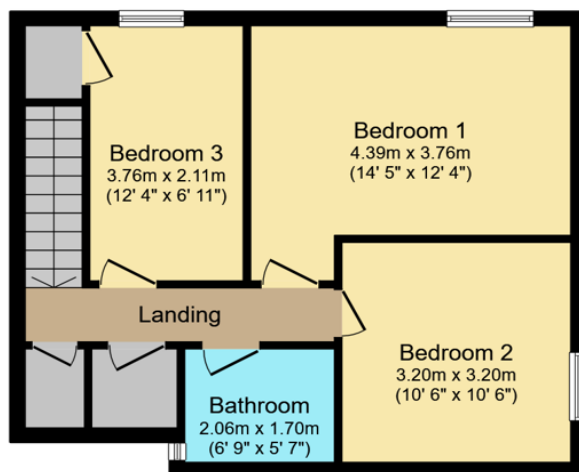
Property Type: Terraced House

Parking: None

Heating: Gas



Ground Floor



First Floor

Total floor area: 92.5 sq.m. (995 sq.ft.)

This floor plan is for illustrative purposes only. It is not drawn to scale. Any measurements, floor areas (including any total floor area), openings and orientations are approximate. No details are guaranteed, they cannot be relied upon for any purpose and do not form any part of any agreement. No liability is taken for any error, omission or misstatement. A party must rely upon its own inspection(s). Powered by www.Propertybox.io

Energy Efficiency Rating		Current	Potential
<i>Very energy efficient - lower running costs</i>			
(92-100) A			
(81-91) B			87
(69-80) C		75	
(55-68) D			
(39-54) E			
(21-38) F			
(1-20) G			
<i>Not energy efficient - higher running costs</i>			
England, Scotland & Wales		EU Directive 2002/91/EC	

Foxley, Washington, Tyne and Wear, NE37 3BN

Contact your local branch today for more information on this property:

235 Church Street, Blackpool, Lancashire, FY1 3PB, <http://www.kenricksestateagents.co.uk/>

These particulars, whilst believed to be accurate are set out as a general outline only for guidance and do not constitute any part of an offer or contract. Intending purchasers should not rely on them as statements of representation of fact, but must satisfy themselves by inspection or otherwise as to their accuracy. No person in this firm's employment has the authority to make or give any representation or warranty in respect of the property.

