



2 bed terraced house to buy in

Best View, Houghton Le Spring, Tyne and Wear, DH4 7QW

£99,950

🏠 x2 🚿 x1 🚻 x1

Tenure

Freehold

Property features

- ✓ Extended Family Home
- ✓ Two Double Bedrooms
- ✓ Open Plan Kitchen/Diner
- ✓ Utility & Ground Floor W.C
- ✓ EPC Rating C

On Street parking

Key Information

- ✓ Council Tax: Band A
- ✓ EPC Rating: C
- ✓ Heating supply: Gas

Description

****EXTENDED FAMILY HOME**TWO DOUBLE BEDROOMS**OPEN PLAN KITCHEN/DINER**UTILITIY & GROUND FLOOR W.C**POPULAR LOCATION*NO UPPER CHAIN****

Pattinson Estate Agents are delighted to welcome to the market this extended two bed family home, situated on the sought after street of Best View in Penshaw. Perfectly located within close proximity to local amenities, popular local schools, fantastic public transport and major road link via the A19. Also within walking distance to Herrington Country Park and a short drive to Sunderland and Houghton Le Spring Town Centre.

This deceptively spacious property has the benefit of no upper chain and briefly consists of:- Entrance/hallway, spacious lounge with a gas fire , open plan kitchen/dining room, utility and a ground floor W.C. To the first floor lies two double bedrooms and a three piece bathroom, externally there is an enclosed forecourt to the front and a private North/West facing yard to the rear.

Early viewings come highly recommended to appreciate the size and location of this family home. Please call our Houghton Branch on arrange a viewing.

Council Tax Band: A

Tenure: Freehold

Price: £99,950

Property Type: Terraced House

Parking: On Street

Heating: Gas

Entrance/Hallway

Property entrance leading to the hallway, which gives access to the lounge and first floor staircase.

Lounge

4.20m x 5.01m (13'9" x 16'5")

Spacious lounge with laminate flooring, feature gas fireplace, radiator and a double glazed front aspect window.



Kitchen/Dining Room

6.66m x 4.50m (21'10" x 14'9")

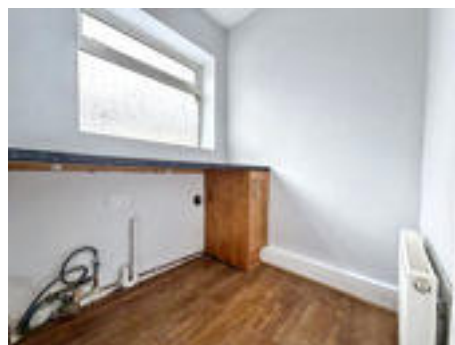
Open plan kitchen/dining room benefiting from a range of shaker style upper and lower units with contrasting work surfaces, plumbing for a washing machine, storage cupboard, integrated dual ovens and hob. Laminate flooring, tiled splash back, radiator, two double glazed rear aspect window and an external door leading to the rear yard.



Utility Area

1.84m x 1.91m (6'0" x 6'3")

Utility room with a base unit and contrasting work surface, plumbing for a washing machine and space for a dryer. Laminate flooring, radiator and a double glazed rear aspect window.



Ground Floor W.C

0.89m x 1.93m (2'11" x 6'3")

Convenient downstairs W.C with laminate flooring, radiator and a double glazed rear aspect window.



Bedroom One

3.46m x 4.98m (11'4" x 16'4")

Double bedroom with carpet flooring, storage cupboard, radiator and a double glazed front aspect window.



Bedroom Two

3.41m x 3.18m (11'2" x 10'5")

Double bedroom with carpet flooring, radiator and a double glazed rear aspect window

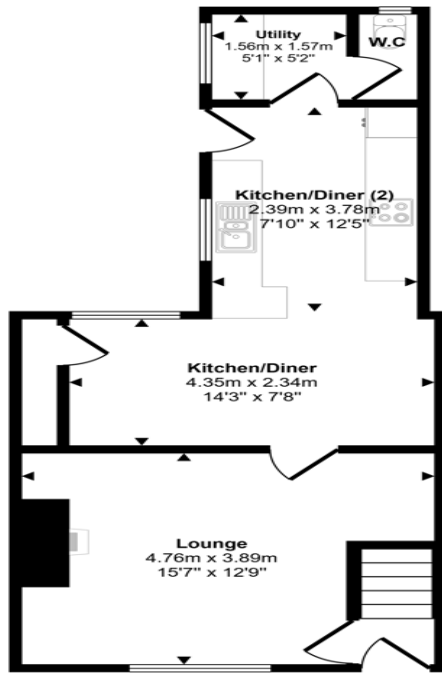


External

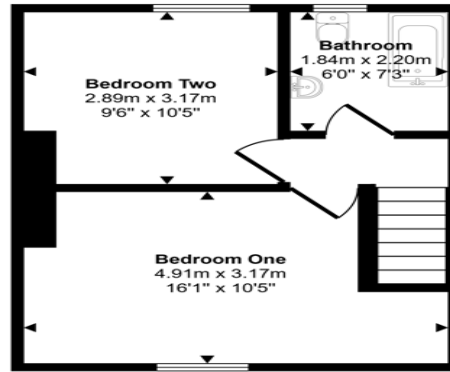
Externally to the front there is an enclosed forecourt and a private yard to the rear.



Approx Gross Internal Area
76 sq m / 816 sq ft



Ground Floor
Approx 44 sq m / 476 sq ft



First Floor
Approx 32 sq m / 341 sq ft

This floorplan is only for illustrative purposes and is not to scale. Measurements of rooms, doors, windows, and any items are approximate and no responsibility is taken for any error, omission or mis-statement. Icons of items such as bathroom suites are representations only and may not look like the real items. Made with Made Snappy 360.

Energy Efficiency Rating		
	Current	Potential
Very energy efficient - lower running costs		
(92-100) A		
(81-91) B		85
(69-80) C	69	
(55-68) D		
(39-54) E		
(21-38) F		
(1-20) G		
Not energy efficient - higher running costs		
England, Scotland & Wales		EU Directive 2002/91/EC

Best View, Houghton Le Spring, Tyne and Wear, DH4 7QW

Contact your local branch today for more information on this property:

235 Church Street, Blackpool, Lancashire, FY1 3PB, <http://www.kenricksestateagents.co.uk/>

These particulars, whilst believed to be accurate are set out as a general outline only for guidance and do not constitute any part of an offer or contract. Intending purchasers should not rely on them as statements of representation of fact, but must satisfy themselves by inspection or otherwise as to their accuracy. No person in this firm's employment has the authority to make or give any representation or warranty in respect of the property.

