



3 bed semi-detached house to buy in NE37

Coverdale Avenue, Washington, Tyne and Wear, NE37 2JN

£120,000

🏠 x3 🚗 x1 🚲 x1

Tenure

Freehold

Allocated parking

Property features

- ✓ THREE BEDROOM SEMI DETACHED
- ✓ SPACIOUS FRONT & REAR GARDEN
- ✓ OFF STREET PARKING
- ✓ EPC Rating D

Key Information

- ✓ Council Tax: Band A
- ✓ EPC Rating: D
- ✓ Heating supply: Air Source Heat Pump

Description

Pattinson Estate agents welcome to the market this spacious three bedroom, semi detached property situated on Coverdale Avenue, Usworth. Ideally located close to local shops amenities and schools this property has fantastic transport links to Washington Galleries, Newcastle, Sunderland and beyond. Benefitting from gas central heating and double glazing throughout, as well as having spacious front and rear gardens, this property comes with no upper chain. Briefly comprising of:- Entrance, utility, w/c, kitchen and lounge/dining room. To the first floor we have two double bedrooms, a third bedroom and a family bathroom. Externally there are front and rear gardens.

To arrange a viewing please call Pattinson Washington today on 0191 415 4467 or email washington@pattinson.co.uk

Council Tax Band: A

Tenure: Freehold

Price: £120,000

Property Type: Semi-detached house

Parking: Allocated

Heating: Air Source Heat Pump

External

Living Room



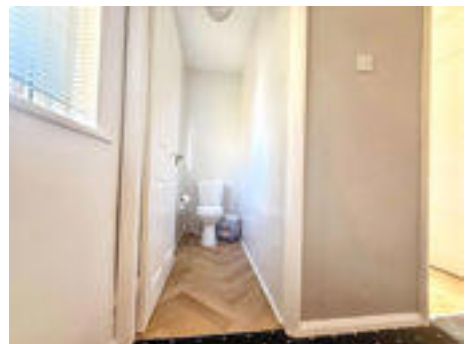
Dining Room



Kitchen



Downstairs bathroom



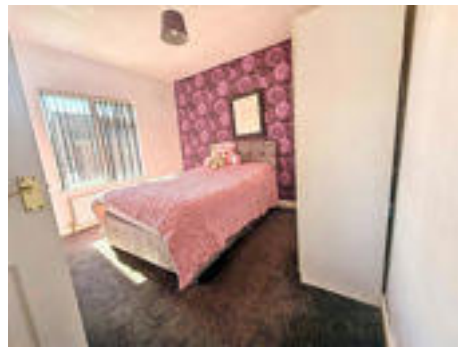
Bedroom 1



Bedroom 2



Bedroom 3




Bathroom



Garden





Energy Efficiency Rating		
	Current	Potential
<i>Very energy efficient - lower running costs</i>		
(92-100) A		
(81-91) B		
(69-80) C		76
(55-68) D	65	
(39-54) E		
(21-38) F		
(1-20) G		
<i>Not energy efficient - higher running costs</i>		
England, Scotland & Wales		EU Directive 2002/91/EC 

Coverdale Avenue, Washington, Tyne and Wear, NE37 2JN

Contact your local branch today for more information on this property:

235 Church Street, Blackpool, Lancashire, FY1 3PB, <http://www.kenricksestateagents.co.uk/>

These particulars, whilst believed to be accurate are set out as a general outline only for guidance and do not constitute any part of an offer or contract. Intending purchasers should not rely on them as statements of representation of fact, but must satisfy themselves by inspection or otherwise as to their accuracy. No person in this firm's employment has the authority to make or give any representation or warranty in respect of the property.

