



### 3 bed terraced house to buy in

Teviot, Rickleton, Washington, Tyne and Wear, NE38 9EE

# £145,000

🏠 x3 🚗 x1 🚻 x1

Tenure

**Freehold**

### Property features

- ✓ Mid Terrace House
- ✓ Three Bedrooms
- ✓ UPVC Double Glazing
- ✓ Garage and Gardens
- ✓ EPC Rating C

Driveway & Garage parking

## Key Information

- ✓ Council Tax: Band A
- ✓ EPC Rating: C
- ✓ Heating supply: Gas

## Description

Located in a highly sought after area on the edge of Washington, close to well regarded schools and excellent transport links, this spacious three bedroom mid terrace home offers ideal family accommodation set over three floors.

The property benefits from UPVC double glazing, a ground floor cloakroom with WC, an integral garage with driveway, and attractive gardens, all situated within a quiet cul de sac setting. Convenient access to the A1 and A19 provides excellent commuting options, while the nearby Galleries offer a wide range of shopping facilities, dining options, and amenities including a health centre.

The accommodation begins with an entrance hall leading to a cloakroom WC, internal access to the garage, and a generous kitchen diner on the ground floor. The first floor landing provides access to a spacious lounge and a third bedroom. On the top floor there is a further landing with a useful walk in storage cupboard, a family bathroom, and two additional bedrooms.

Externally, the front of the property features a driveway leading to the integral garage along with an outdoor storage cupboard. To the rear, there is a pleasant enclosed garden with a decked patio area that steps up to an artificial lawn, creating a low maintenance outdoor space ideal for relaxing or entertaining.

Council Tax Band: A

Tenure: Freehold

Price: £145,000

Property Type: Terraced House

Parking: Driveway & Garage

Heating: Gas

## Entrance Hall

UPVC double glazed door, radiator, laminate flooring, door to the garage, stairs to the first floor



## Cloaks W/C

WC, wash basin



## Kitchen/Diner

4.70m x 3.10m (15'5" x 10'2")

The kitchen has a range of wall and base units with space for a gas cooker with extractor over, stainless steel sink and drainer, space for an automatic washing machine, under stairs cupboard, two radiators, two UPVC double glazed windows and a composite door leading to the rear garden



## First Floor Landing



## Lounge

3.50m x 4.80m (11'5" x 15'8")

Two UPVC double glazed windows, two radiators, stained floorboards



## Bedroom Three

4.80m x 2.30m (15'8" x 7'6")

Two UPVC double glazed windows, radiator



## Second Floor Landing

Walk in storage cupboard



## Bedroom One

3.20m x 3.60m (10'5" x 11'9")

UPVC double glazed window, radiator, two built in cupboards



## Bathroom

2.60m x 1.50m (8'6" x 4'11")

Three piece suite comprising a panelled bath with shower tap, WC, vanity wash basin, WC, tiled walls, radiator, UPVC double glazed window, radiator



## Bedroom Two

3.20m x 3.90m (10'5" x 12'9")

UPVC double glazed window, radiator

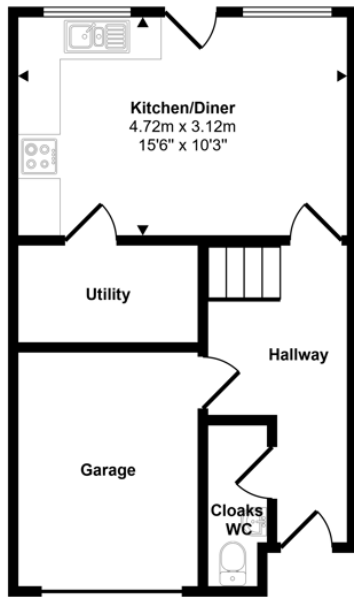


## External

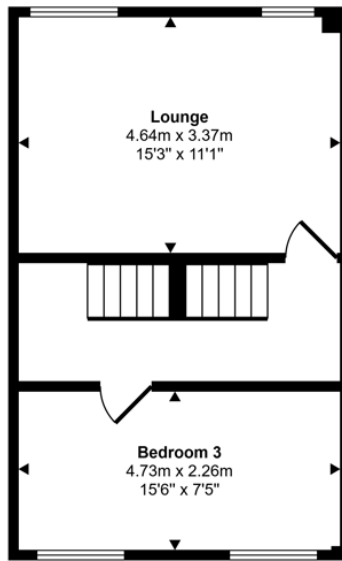
Driveway leading to an integral garage to the front. To the rear there is a garden with decked patio and artificial grass lawn



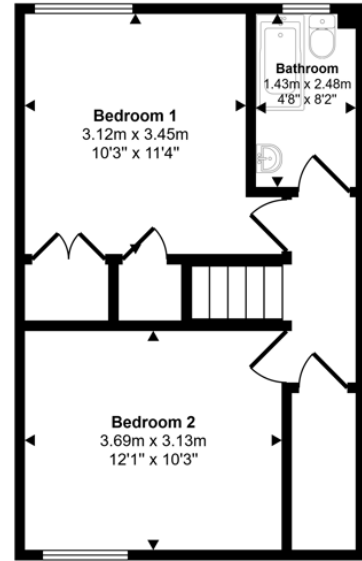
Approx Gross Internal Area  
110 sq m / 1179 sq ft



Ground Floor  
Approx 38 sq m / 404 sq ft



First Floor  
Approx 36 sq m / 384 sq ft



Second Floor  
Approx 36 sq m / 390 sq ft

This floorplan is only for illustrative purposes and is not to scale. Measurements of rooms, doors, windows, and any items are approximate and no responsibility is taken for any error, omission or mis-statement. Icons of items such as bathroom suites are representations only and may not look like the real items. Made with Made Snappy 360.

Energy Efficiency Rating		Current	Potential
<i>Very energy efficient - lower running costs</i>			
(92-100) <b>A</b>			
(81-91) <b>B</b>			83
(69-80) <b>C</b>		75	
(55-68) <b>D</b>			
(39-54) <b>E</b>			
(21-38) <b>F</b>			
(1-20) <b>G</b>			
<i>Not energy efficient - higher running costs</i>			
<b>England, Scotland &amp; Wales</b>		EU Directive 2002/91/EC	

Teviot, Rickleton, Washington, Tyne and Wear, NE38 9EE

Contact your local branch today for more information on this property:

**235 Church Street, Blackpool, Lancashire, FY1 3PB, <http://www.kenricksestateagents.co.uk/>**

These particulars, whilst believed to be accurate are set out as a general outline only for guidance and do not constitute any part of an offer or contract. Intending purchasers should not rely on them as statements of representation of fact, but must satisfy themselves by inspection or otherwise as to their accuracy. No person in this firm's employment has the authority to make or give any representation or warranty in respect of the property.

