



3 bed terraced house to buy in

South View, Shiney Row, Houghton Le Spring, Tyne and Wear, DH4 4JR

£120,000

 x3  x1  x1

Tenure

Freehold

Driveway parking

Property features

- ✓ Recently Refurbished
- ✓ Modernised Throughout
- ✓ Three Bedrooms
- ✓ No Upper Chain
- ✓ EPC Rating F

Key Information

- ✓ Council Tax: Band A
- ✓ EPC Rating: F
- ✓ Heating supply: Air Source Heat Pump

Description

An exceptional opportunity to acquire this incredibly modernised and recently refurbished three bedroom terraced home, ideally situated on the ever-popular South View, Shiney Row. Finished to an outstanding standard throughout, this stunning property is truly ready to move straight into.

Upon entering, you are welcomed by a stylish entrance hall featuring beautiful herringbone flooring which flows seamlessly throughout the ground floor, creating a contemporary and cohesive feel. The property boasts a well-presented living room, perfect for relaxing, alongside a brand new, high-spec modern kitchen diner designed with both functionality and style in mind.

The home also benefits from a beautifully finished bathroom, completed to a high standard with modern fixtures and fittings. To the first floor, there are three well-proportioned bedrooms, offering comfortable and versatile living space.

Further benefits include a newly installed boiler and a full rewire, providing peace of mind for any prospective buyer.

Externally, the property features a large patio area ideal for outdoor entertaining, while to the rear there is a private yard complete with a built-on shed, offering additional storage.

This turn-key home is perfect for a wide range of buyers and early viewing is highly recommended to fully appreciate the quality and finish on offer.

Council Tax Band: A

Tenure: Freehold

Price: £120,000

Property Type: Terraced House

Parking: Driveway

Heating: Air Source Heat Pump

External Front



Entrance Hall

5.424m x 0.961m (17'9" x 3'1")



Living Room

4.156m x 3.661m (13'7" x 12'0")



Kitchen Diner

4.841m x 3.587m (15'10" x 11'9")



Bathroom

3.899m x 2.007m (12'9" x 6'7")



First Floor Landing



Bedroom One

4.759m x 3.185m (15'7" x 10'5")



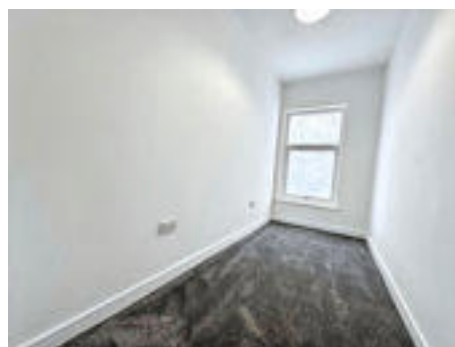
Bedroom Two

3.687m x 3.047m (12'1" x 9'11")



Bedroom Three


5.817m x 1.646m (19'1" x 5'4")



Exterior Yard





Energy Efficiency Rating		
	Current	Potential
<i>Very energy efficient - lower running costs</i>		
(92-100) A		
(81-91) B		86
(69-80) C		
(55-68) D		
(39-54) E		
(21-38) F	30	
(1-20) G		
<i>Not energy efficient - higher running costs</i>		
England, Scotland & Wales		EU Directive 2002/91/EC 

South View, Shiney Row, Houghton Le Spring, Tyne and Wear, DH4 4JR

Contact your local branch today for more information on this property:

235 Church Street, Blackpool, Lancashire, FY1 3PB, <http://www.kenricksestateagents.co.uk/>

These particulars, whilst believed to be accurate are set out as a general outline only for guidance and do not constitute any part of an offer or contract. Intending purchasers should not rely on them as statements of representation of fact, but must satisfy themselves by inspection or otherwise as to their accuracy. No person in this firm's employment has the authority to make or give any representation or warranty in respect of the property.

