



3 bed terraced house to buy in

Tynevale Terrace, Lemington, Newcastle upon Tyne, Tyne and Wear, NE15 8EJ

£110,000

🏠 x3 🚗 x1 🚲 x1

Tenure

Freehold

Property features

- ✓ Terraced House
- ✓ Three Bedrooms
- ✓ Lounge and Dining Room
- ✓ Viewing Recommended
- ✓ EPC Rating E

On Street parking

Key Information

- ✓ Council Tax: Band A
- ✓ EPC Rating: E
- ✓ Heating supply: Gas

Description

This three bedroom terraced house on Tynevale Terrace offers a warm and inviting layout with clearly defined living spaces, making it easy to imagine everyday life here. Stepping through the front door, the entrance hallway leads into a comfortable lounge, a perfect spot to unwind at the end of the day, while the separate dining room provides a natural place for family meals, gatherings and celebrations.

The kitchen is positioned to the rear of the property, offering a practical and well-used space that works well for day-to-day living. Upstairs, the first floor provides three bedrooms, each with its own potential to suit family members, guests or home working, along with a bathroom completing the accommodation.

A useful loft space adds valuable storage, helping keep the main living areas clutter-free. Located in the established Lemington area, the property is well placed for local shops, schools and transport links, while still offering a sense of community. This is a home with a straightforward, comfortable layout and plenty of scope for a new owner to make it their own.

Council Tax Band: A

Tenure: Freehold

Price: £110,000

Property Type: Terraced House

Parking: On Street

Heating: Gas

Entrance Hallway

Lounge

4.30m x 3.90m (14'1" x 12'9")



Dining Room

4.50m x 3.80m (14'9" x 12'5")



Kitchen

3.70m x 2.30m (12'1" x 7'6")



Stairs to First Floor

Bedroom One

3.39m x 3.30m (11'1" x 10'9")



Bedroom Two

3.39m x 3.30m (11'1" x 10'9")



Bedroom Three

3.44m x 2.00m (11'3" x 6'6")



Bathroom



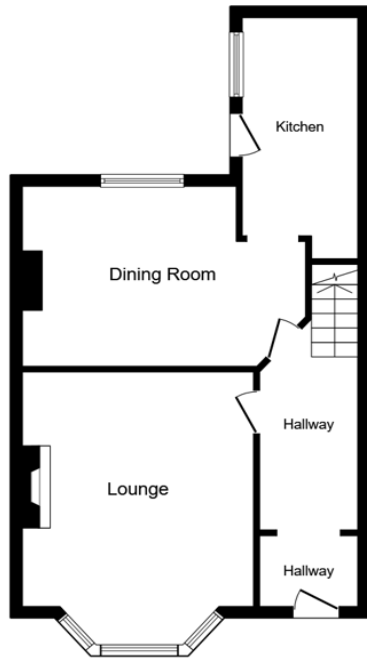
Loft Space



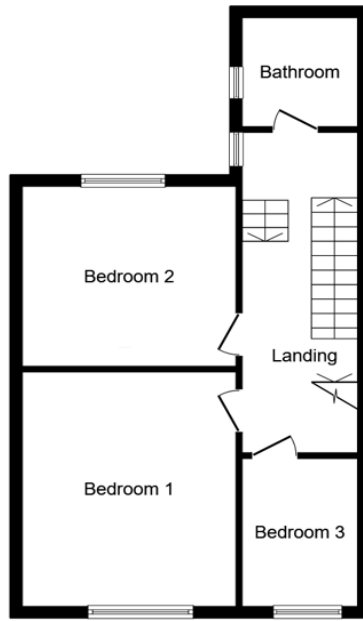
External

Garden to front and yard to the rear.

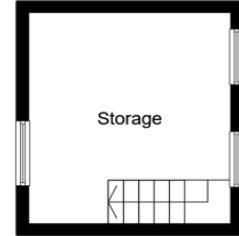




Ground Floor



First Floor



Second Floor

This floor plan is for illustrative purposes only. It is not drawn to scale. Any measurements, floor areas (including any total floor area), openings and orientations are approximate. No details are guaranteed, they cannot be relied upon for any purpose and do not form any part of any agreement. No liability is taken for any error, omission or misstatement. A party must rely upon its own inspection(s). Powered by www.Propertybox.io

Energy Efficiency Rating		
	Current	Potential
<i>Very energy efficient - lower running costs</i>		
(92-100) A		
(81-91) B		81
(69-80) C		
(55-68) D		
(39-54) E	46	
(21-38) F		
(1-20) G		
<i>Not energy efficient - higher running costs</i>		
England, Scotland & Wales		EU Directive 2002/91/EC

Tynevale Terrace, Lemington, Newcastle upon Tyne, Tyne and Wear, NE15 8EJ

Contact your local branch today for more information on this property:

235 Church Street, Blackpool, Lancashire, FY1 3PB, <http://www.kenricksestateagents.co.uk/>

These particulars, whilst believed to be accurate are set out as a general outline only for guidance and do not constitute any part of an offer or contract. Intending purchasers should not rely on them as statements of representation of fact, but must satisfy themselves by inspection or otherwise as to their accuracy. No person in this firm's employment has the authority to make or give any representation or warranty in respect of the property.

