



2 bed terraced house to buy in

Hawksbury, Whickham, Newcastle upon Tyne, Tyne & Wear, NE16 5ZE

£160,000

 x2  x1  x1

Tenure

Leasehold

Property features

- ✓ Two bedrooms
- ✓ Terrace house
- ✓ Rear garden
- ✓ Situated in whickham
- ✓ EPC Rating C

Garage parking

Key Information

- ✓ Council Tax: Band B
- ✓ EPC Rating: C
- ✓ Heating supply: Gas

Description

Heart of Whickham!! 2 bedroom terraced house ideally located in the heart of Whickham, Newcastle upon Tyne. This is a perfect opportunity for first-time buyers or investors looking for a keen residential sale.

Occupying a charming position within a highly desired area, this property boasts of a welcoming front reception room, which leads you into the kitchen complete with essential facilities providing a practical and comfortable living environment.

Upstairs, the property comprises two well-proportioned bedrooms, with built in wardrobes. The family bathroom benefits from a shower over the bath.

Externally, the house benefits from a private rear garden, perfect for outdoor relaxation and socialising during the warmer months. Nestled in a quiet community, this residence offers the luxury of peaceful living whilst being a stone's throw away from local amenities, such as shops, excellent schools, and transport links.

This inviting terraced house in Whickham provides an excellent opportunity for those seeking a blend of comfort and convenience in their new home. Don't miss your chance for a great residential sale in Newcastle upon Tyne, book your viewing today!

Council Tax Band: B

Tenure: Leasehold

Length of Lease: 953 years

Price: £160,000

Property Type: Terraced House

Parking: Garage

Heating: Gas

Porch



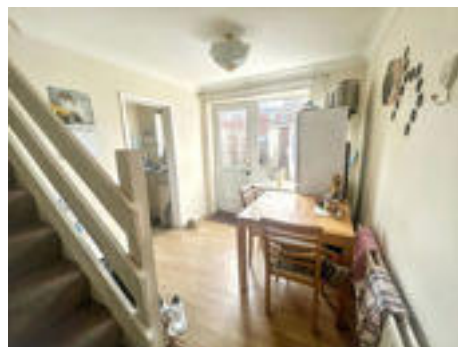
Lounge

4.36m x 3.30m (14'3" x 10'9")



Dining room

2.48m x 3.38m (8'1" x 11'1")



Kitchen

1.86m x 3.42m (6'1" x 11'2")



Master bedroom

4.43m x 2.73m (14'6" x 8'11")



Bedroom two

2.38m x 2.45m (7'9" x 8'0")

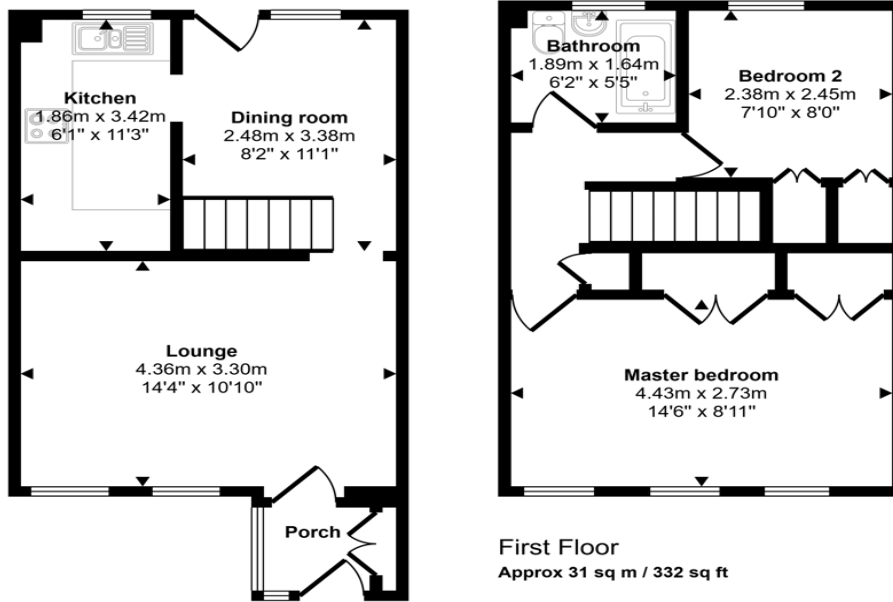


Bathroom

1.86m x 3.42m (6'1" x 11'2")



Approx Gross Internal Area
64 sq m / 684 sq ft



This floorplan is only for illustrative purposes and is not to scale. Measurements of rooms, doors, windows, and any items are approximate and no responsibility is taken for any error, omission or mis-statement. Icons of items such as bathroom suites are representations only and may not look like the real items. Made with Made Snappy 360.

Energy Efficiency Rating		
	Current	Potential
<i>Very energy efficient - lower running costs</i>		
(92-100) A		
(81-91) B		88
(69-80) C	69	
(55-68) D		
(39-54) E		
(21-38) F		
(1-20) G		
<i>Not energy efficient - higher running costs</i>		
England, Scotland & Wales		EU Directive 2002/91/EC

Hawksbury, Whickham, Newcastle upon Tyne, Tyne & Wear, NE16 5ZE

Contact your local branch today for more information on this property:

235 Church Street, Blackpool, Lancashire, FY1 3PB, <http://www.kenricksestateagents.co.uk/>

These particulars, whilst believed to be accurate are set out as a general outline only for guidance and do not constitute any part of an offer or contract. Intending purchasers should not rely on them as statements of representation of fact, but must satisfy themselves by inspection or otherwise as to their accuracy. No person in this firm's employment has the authority to make or give any representation or warranty in respect of the property.

